

COUNTY ROAD P

PROPERTY AREA:
 PARCEL 9: 168,452 SQ. FT. (3.87 ACRES)

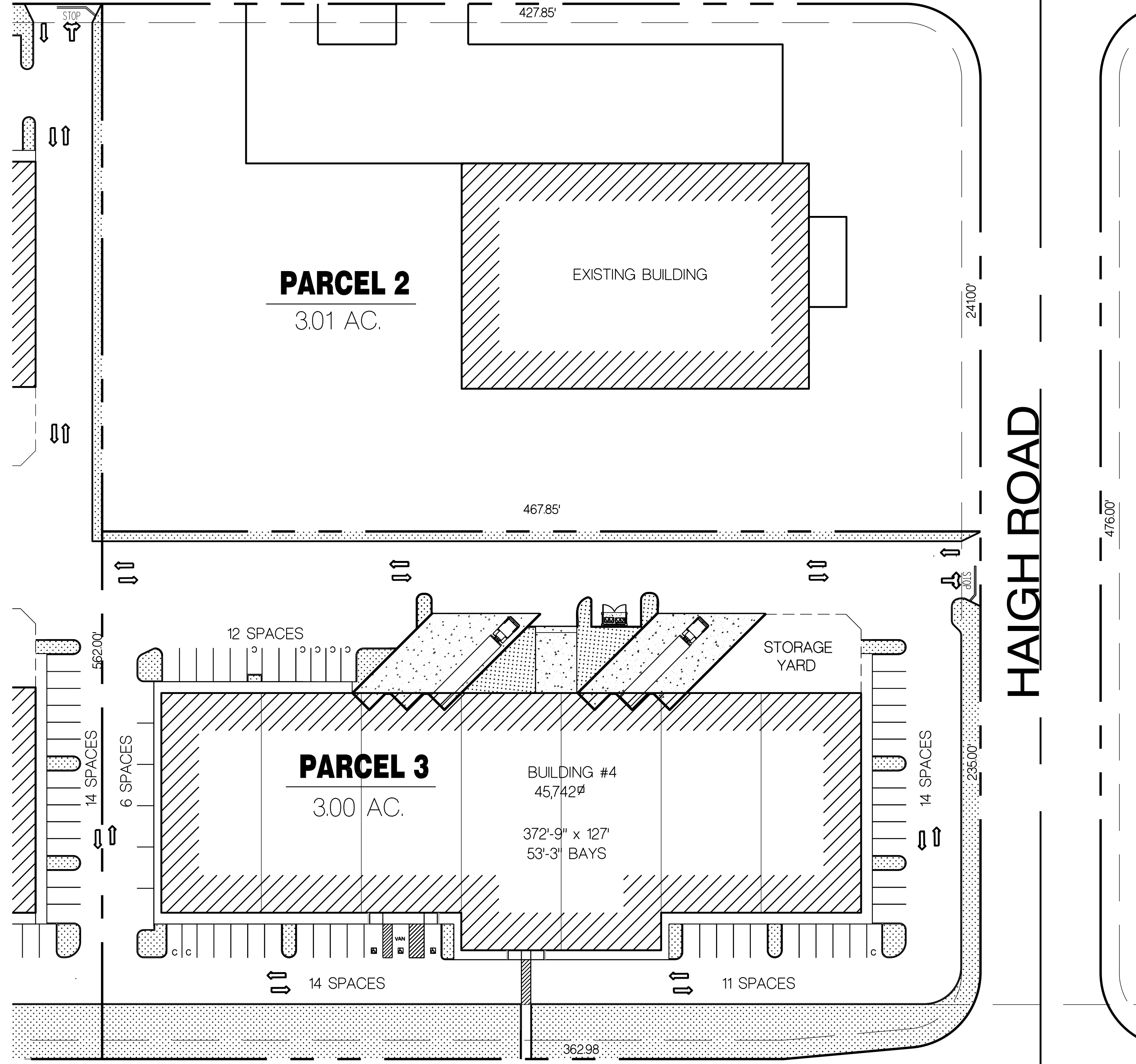
BUILDING AREA:
 BUILDING 1: 52,800 SQ. FT.
 FAR: 0.313

LANDSCAPING:
 TOTAL: 26,588 SQ. FT.
 26,588 / 168,452 = 15.8%

PARKING ANALYSIS:
BUILDING 1:
 STANDARD SPACES: 43
 COMPACT SPACES: 10
 ACCESSIBLE SPACES: 3
 TOTAL SPACES = 66

ASSUMING 80% WAREHOUSE
 REQUIRED PARKING:
 (52,800 * 0.80) / 1500 = 28 SPACES
 (52,800 * 0.20) / 300 = 35 SPACES
 PARKING REQD = 63 SPACES
 REQD ACC. PARKING = 3 SPACES

ARCHITECTURAL SITE PLAN - PARCEL 9



COUNTY ROAD P

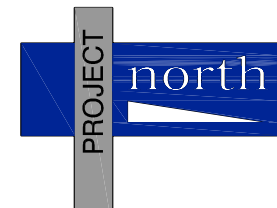
PROPERTY AREA:
 PARCEL 3: 130,694 SQ. FT. (3.00 ACRES)

BUILDING AREA:
 BUILDING 4: 45,742 SQ. FT.
 FAR: 0.350

LANDSCAPING:
 TOTAL: 20,596 SQ. FT.
 20,596 / 130,694 = 15.6%

PARKING ANALYSIS:
BUILDING 4:
 STANDARD SPACES: 46
 COMPACT SPACES: 8
 ACCESSIBLE SPACES: 3
 TOTAL SPACES = 57

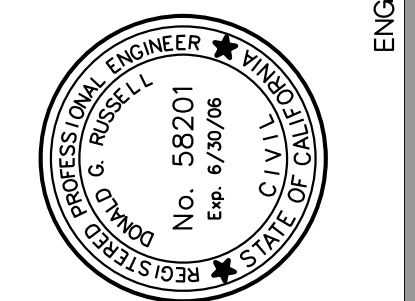
ASSUMING 80% WAREHOUSE
 REQUIRED PARKING:
 (45,742 * 0.80) / 1500 = 24 SPACES
 (45,742 * 0.20) / 300 = 31 SPACES
 PARKING REQD = 55 SPACES
 REQD ACC. PARKING = 3 SPACES



ARCHITECTURAL SITE PLAN - PARCEL 3

from the design desk of...

Russell, Galloway, Associates
 7 Sierra Nevada Court
 Chico, California 95928
 (530) 342-0302 fax 342-1882
 www.rga-chico.com



stamp

SCHEMATIC SITE PLANNING FOR
TRI-COUNTY E.D.C.
 HAIGH FIELD INDUSTRIAL PARK
 CHICO, CALIFORNIA
 ASSESSOR'S PARCEL NUMBER

r.g.a. project number: 05-040 plancheck/ status number: 00-000

project information

DRAWN	DATE
CHECKED	REVIEWER
STATUS DATE	05/05/05
REVISION	REVISION
REVISION	REVISION
REVISION	REVISION